



GROUT-FREE
WALL TILES
TONGUE & GROOVE INTERLOCKING
24"x12" (60.96cm x 30.48cm)

Tile Installation Guide



Before Beginning

Ella's Bubbles is not responsible and will not be held liable for project failures if installation guidelines are not followed. Ella's Bubbles recommends that you install these tiles over an existing substrate to ensure proper structural integrity. These tiles are not intended to be attached to raw concrete, poured concrete walls or concrete block basement walls.

FOR INSTALLATION IN DRY ENVIRONMENTS

Appropriate substrates in a dry environment would include framed walls with existing tile, drywall, cement board, OSB, or plywood. Tiles must be attached to structures that comply with your local building codes and have incorporated appropriate moisture abatement measures.

SHOWER, TUB OR DIRECT WATER ENVIRONMENTS

Although Ella's tiles are 100% waterproof when used with sealant in the seams, we recommend you follow your local building codes for wet environments like shower and tub enclosures. In a tub or shower area, existing ceramic tile walls can be covered with no additional preparation. Otherwise, installation over a waterproof substrate is required, such as



Wall Tile Installation Tools and supplies needed:

- Protective eye wear
- Measuring tape
- Level
- Hand saw or circular saw/table saw
- Drill bit & jig saw (for cutting holes)
- Caulking gun for 10.3 oz. adhesive tubes
- Adhesive for PVC panels (Recommended adhesives: Loctite® Power Grab® Ultimate (white formula), LIQUID NAILS® FUZE*IT®, Tite bond Titegrab Ultimate™ and Manus 75-AM HV)
- Silicone-based sealant for kitchen/bath (for wet environments)
- Optional: Wood shims

Before you begin installation

Wall Solution Tongue&Groove can be installed directly on mineral tiles (ceramic, stoneware, porcelain), expanding to the following surfaces after applying a primer:

- Wood (OSB, wood strip, okumen plywood...) It is important to remove any rest of varnish or paint that can be detached once installed the coating.
- Plasterboard
- Metallic surfaces (Aluminum, iron, steel) It is needed to remove paint or varnish first, and applying a properly cover to stabilize the surface.
- Plaster surfaces
- Bases of cement or derivatives

The surface must be cleaned, free from oil, dust or other substances that might be detached once tiles installed. Remove any rest of wallpaper, flaky painting, varnish, etc...

Remove completely any coatings adhered to the wall such as wallpapers, decorative vinyl, textile papers, etc. Repair, if necessary, any gap on the surface in order to avoid any slope.

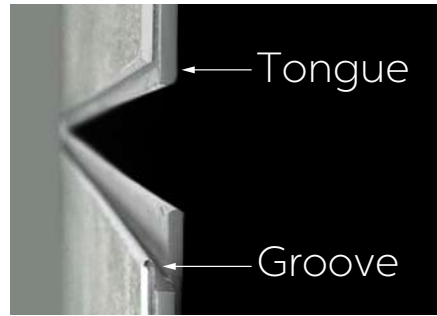
Perform a "dry layout" prior to applying adhesive. This will help you visualize tile cuts and placement of tiles with similar designs. Some of the stone-look tiles include color variations, lines, and cracks to emulate the look of natural stone. Avoid placing tiles with similar or identical patterns or texture next to each other. Measure walls, & check for level and square. Depending on dimensions and room construction, you may need to trim some panels accordingly.

Recomendations

- Save at least 10 % of wall tiles in horizontal position to cover possible future deterioration.
- Get a perfect finish with our coordinated profiles for corners and for wall tiles ends.
- Do not place heavy objects (clothes racks, lighting fixtures, mirrors ...) directly on the wall tiles.
- Drill in such a way that fastening accessories, such as screws, reach the rear wall on which the Wall Solution Tongue&Groove plate is installed.

If you choose to finish the edges, we recommend silicone on the inside of the wall and outside after the tile is fully installed. We recommend using silicone to finish the bottom row, regardless of flooring material.

Tiles' unique interlocking edges have a tongue and a groove. The tile's groove should be facing up when installing.



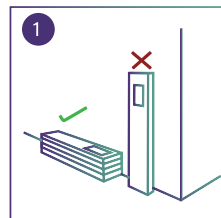
Steps by step installation

Wall Solution Tongue&Groove must be removed from its envelope and being placed where the tiles are going to be installed 24 hours before its installation.

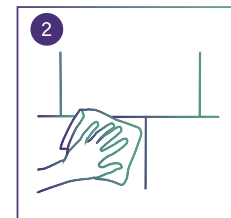
Prior to carrying out any work or measurements, allow time for Wall Solution Tongue&Groove to climatize with the environment (24 hours). Within the project area ensure the Wall Solution Tongue&Groove tiles are laid flat.

Wall Solution Tongue&Groove requires being fixed to a flat solid surface, prepare the area beforehand and ensure that it is free from film, dirt and other residues. Remove any rest of wallpaper, flaky painting, varnish, etc.

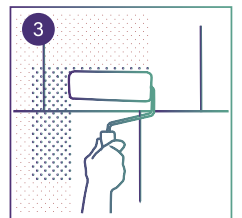
QUICK INSTALLATION GUIDE



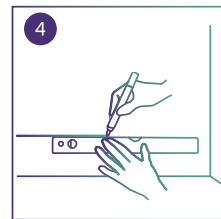
1 Place the boxes horizontally.



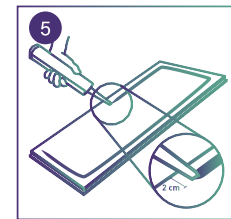
2 Clean the surface.



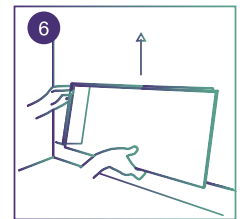
3 Use a primer over the wall before starting.



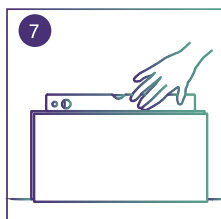
4 Using a spirit level draw a line to make sure tiles will be correctly aligned.



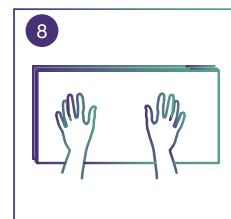
5 Apply a bead of adhesive around the back tile. Leave at least 0.7" gap to the edges.



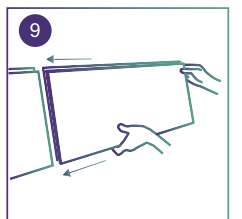
6 Install from the floor to the ceiling, starting from a corner.



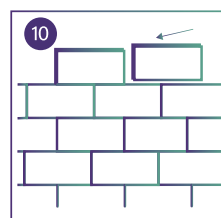
7 Use a spirit level to check it is correctly aligned.



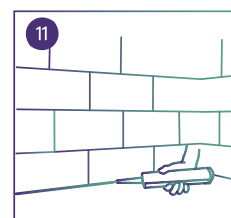
8 Press the tile firmly against the wall to evenly spread the adhesive over the length of the tile.



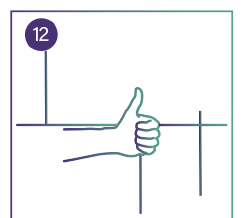
9 Place the following tile by jointing it with the previous one.



10 Repeat with the next tiles.



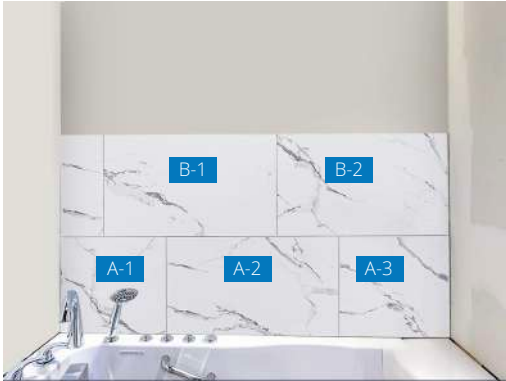
11 Seal around the base with waterproof silicone sealant.



12 Your new wall is complete!

1. Priming the wall using a nap roller before starting with the installation of Wall Solution Tongue&Groove tiles warranty an optimum result.
2. Wall Solution Tongue&Groove need to be installed running from floor to ceiling. Use a spirit level to make sure that Wall Solution Tongue&Groove are fitted squarely.
3. Apply glue line (Ø 1,5 - 2 mm) in the tiles perimeter to form a grid system, do not apply too close to the edges leave at least 2 cm gap or this will spill out onto the face of the tiles.
4. Pressing firmly against the glue over the length of the tile.
5. When you reach the edge of the wall, measure the distance from the last tile to the wall and mark how much of the tile to cut.
6. In order to cut the tile, draw a line. Put a set square or metal ruler on the line, use Drywall saw or oscillating saw for cut it.
7. Using a trim fill in the gap left at base with waterproof silicone sealant.

Suggested Installation tips



Layout all tiles to create a pattern of desire mark them with painters tape A-1, B-1, C-1, D-1.



Silicone applied behind and front of tiles

Corner application put silicone behind tiles and let dry. Apply silicone on the out side corners to help reinforce water tight seal.



Make sure the tile layer first row is straight and level. Determine the desired height of your first tile row and snap or draw a level line at that height for a reference line. Align the tops of each panel in the first row to the snapped line and center use full tile for center



Use a T-square to help insure a straight even cut on the tiles. Replace razors often to ensure clean straight cuts.



Final Installation

Discover more products and additional information at

ellasbubbles.com

Toll Free: 800-480-6850
Office Direct: 312-666-3552

Maintenance



In order to protect your Shower Tile, we recommend the following:

Always consult your dealer if you are going to place the product in places that do not appear as recommended.

Avoid subjecting the coating to extreme temperatures and the continuous action of the sun's rays.

Do not place the product in open places where the sun or rain can reach it directly.

Keep indoor relative humidity between 40% and 60% all year to prevent the coating is subjected to sudden changes in temperature and humidity.

Maintain a temperature in the place of installation of between 16 and 22 °C in order to prevent movement of expansion or contraction in the plates.

The coating surface Wall Solution Tongue&Groove, which is essentially strong and durable. It does not require additional treatments. No need to be polished, varnished, waxed or brightened because no additional treatment retains its intrinsic and essential properties.

Do not use abrasive products or containing compounds such as ammonia, solvents or other aggressive agents.

Using other cleaners can alter product properties such as brightness or colour. If using others cleaning, perform a preliminary test somewhere inconspicuous the wall.