



GROUT-FREE
WALL TILES
TONGUE & GROOVE INTERLOCKING

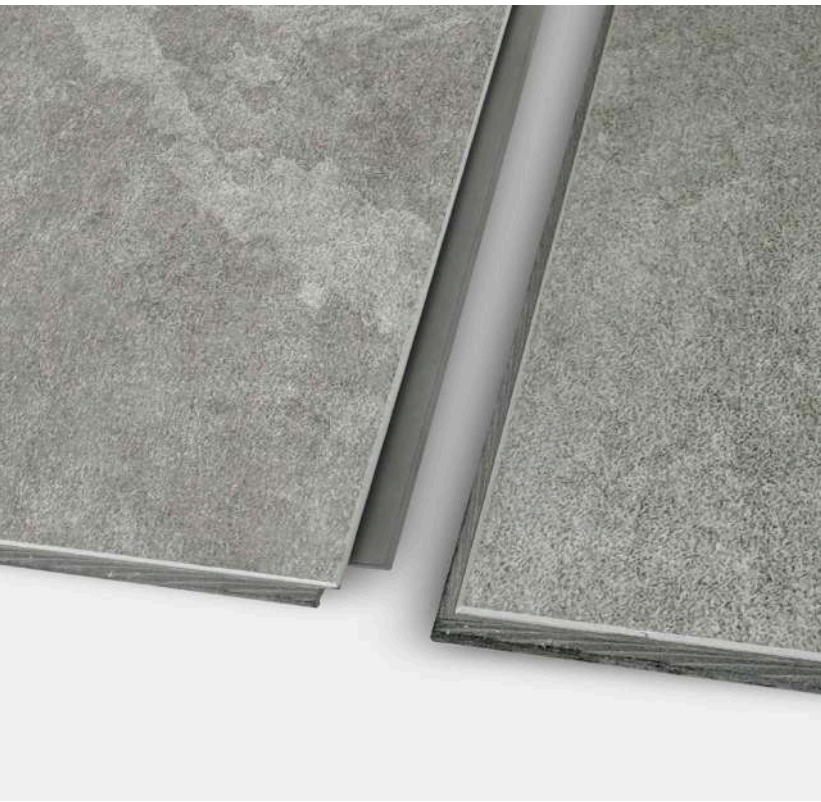
SPECIFICATIONS



Transform Your Space

Transform your spaces with our innovative Grout-Free Wall Tiles Tongue & Groove (T&G) Interlocking System. Designed to offer the ultimate in durability, ease of installation, and aesthetic appeal, these wall tiles are perfect for any interior environment, including damp areas like bathrooms and kitchens.





Tongue & Groove

Extra-hard union with Tongue & Groove connection system. The tiles will remain together for many years.



100% Waterproof

Made from a special composite of mineral fibers, our wall tiles are completely waterproof, making them ideal for wet environments, including showers.



Sound Insulation

Absorbs environmental sounds over 10 dB, adding to the comfort of your space.



High Impact Resistance

The SPC core provides superior rigidity and dent resistance, ensuring that your walls remain pristine for years.



Fire Resistant

Compliant with the B-s2, d0 standard, these tiles are safe for use in public spaces.



Easy Installation

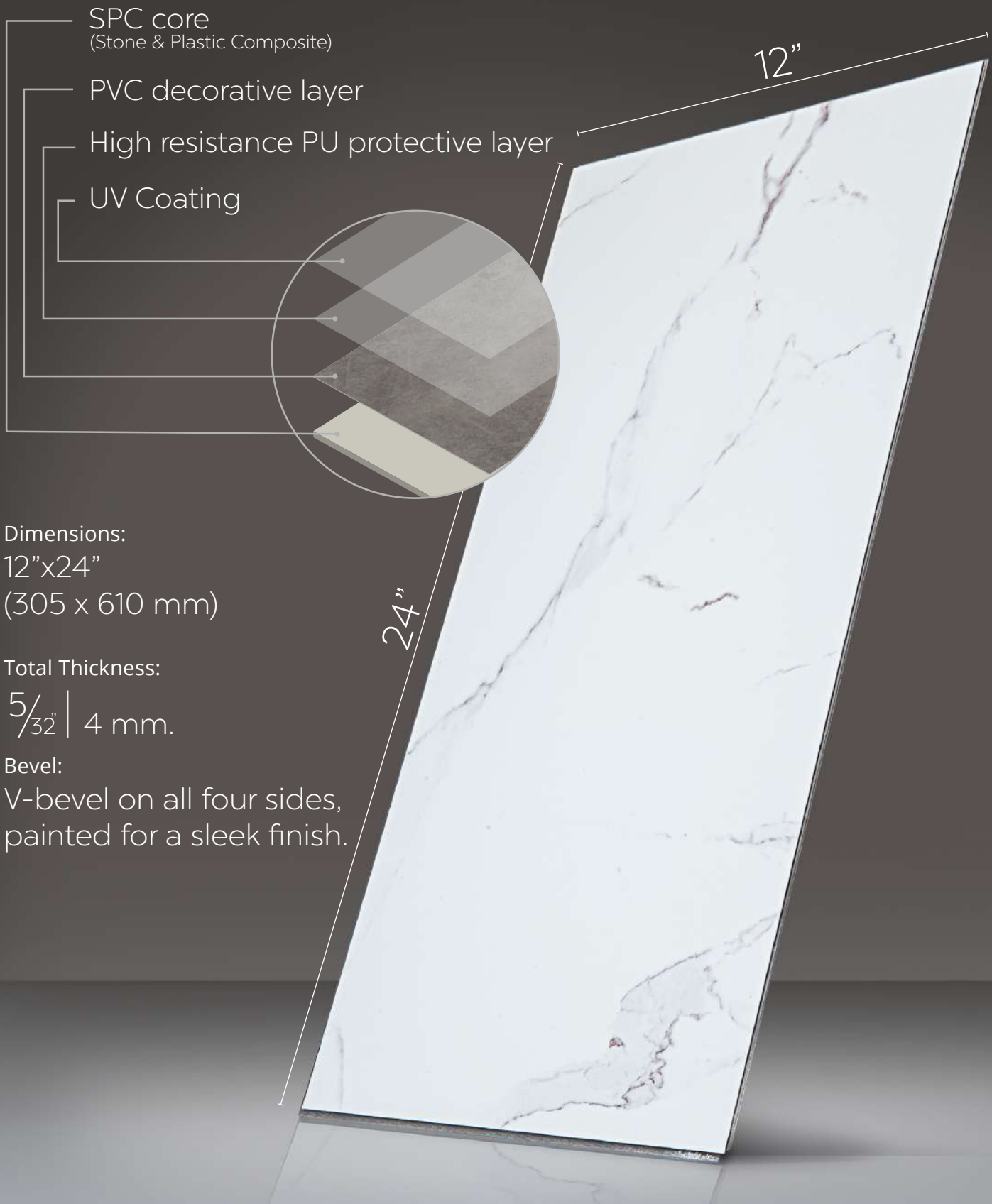
The Tongue & Groove system allows for quick and mess-free installation, without the need for extensive construction work.



Thermal Insulation

The tiles are 3% - 4% warmer than ceramic tiles, contributing to a cozy atmosphere.

Details



SPC core
(Stone & Plastic Composite)

PVC decorative layer

High resistance PU protective layer

UV Coating

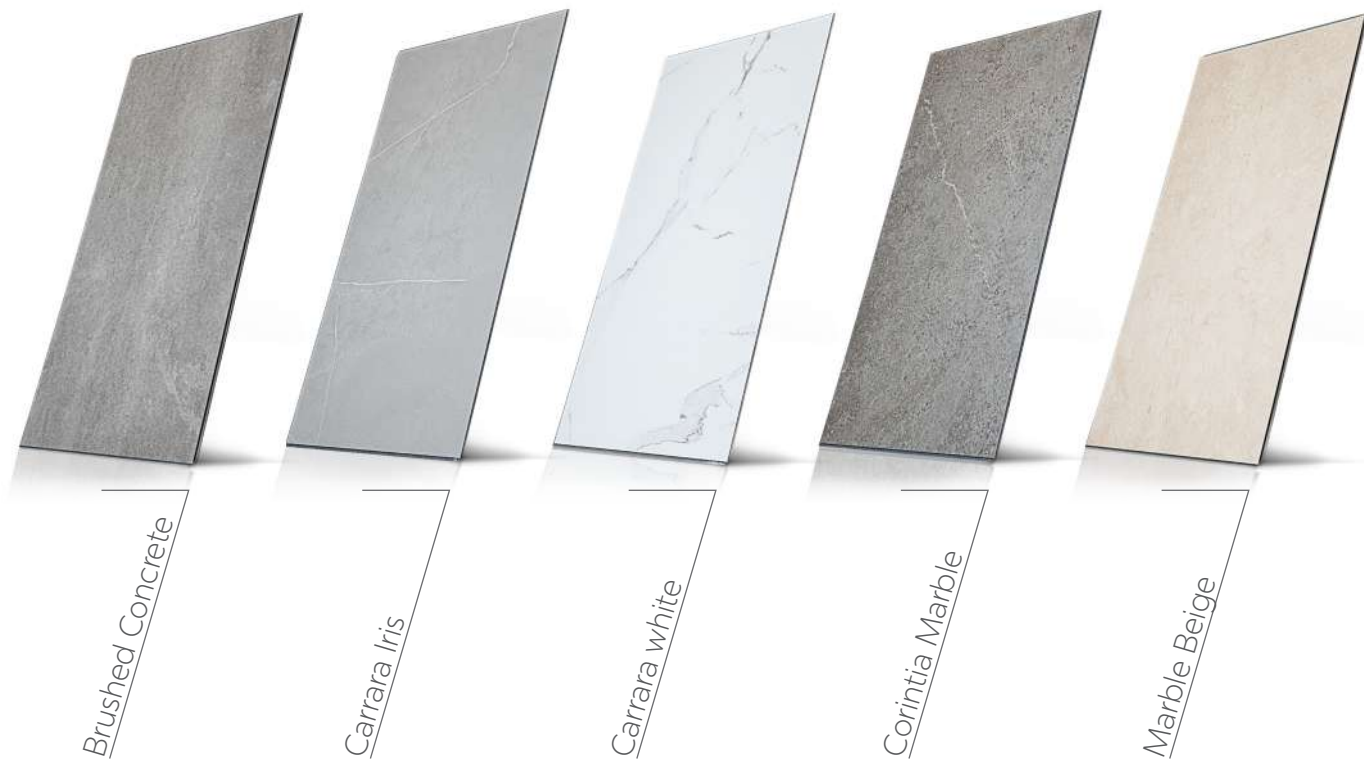
Dimensions:
12"x24"
(305 x 610 mm)

Total Thickness:
 $\frac{5}{32}$ " | 4 mm.

Bevel:
V-bevel on all four sides,
painted for a sleek finish.

Versatile Design

Multiple Color Options

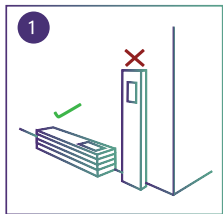


Steps by step installation

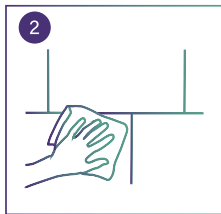
Wall Solution Tongue&Groove must be removed from its envelope and being placed where the tiles are going to be installed 24 hours before its installation.

Prior to carrying out any work or measurements, allow time for Wall Solution Tongue&Groove to climatize with the environment (24 hours). Within the project area ensure the Wall Solution Tongue&Groove tiles are laid flat.

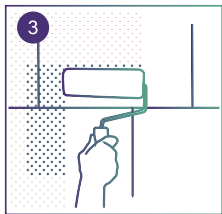
Wall Solution Tongue&Groove requires being fixed to a flat solid surface, prepare the area beforehand and ensure that it is free from film, dirt and other residues. Remove any rest of wallpaper, flaky painting, varnish, etc.



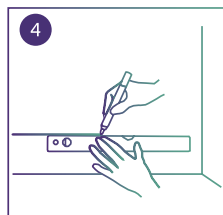
1 Place the boxes horizontally.



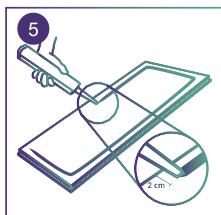
2 Clean the surface.



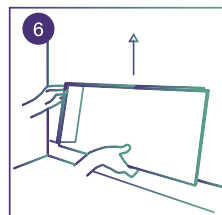
3 Use a primer over the wall before starting.



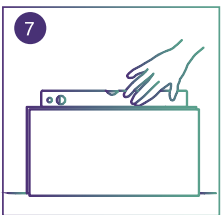
4 Using a spirit level draw a line to make sure tiles will be correctly aligned.



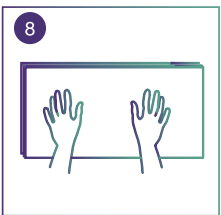
5 Apply a bead of adhesive around the back tile. Leave at least 0.7". Gap to the edges.



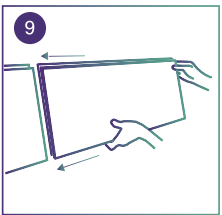
6 Install from the floor to the ceiling, starting from a corner.



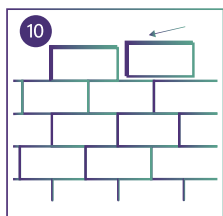
7 Use a spirit level to check it is correctly aligned.



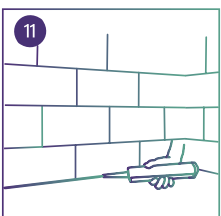
8 Press the tile firmly against the wall to evenly spread the adhesive over the length of the tile.



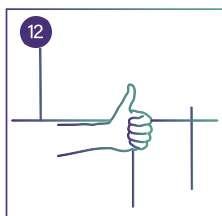
9 Place the following tile by jointing it with the previous one.



10 Repeat with the next tiles.



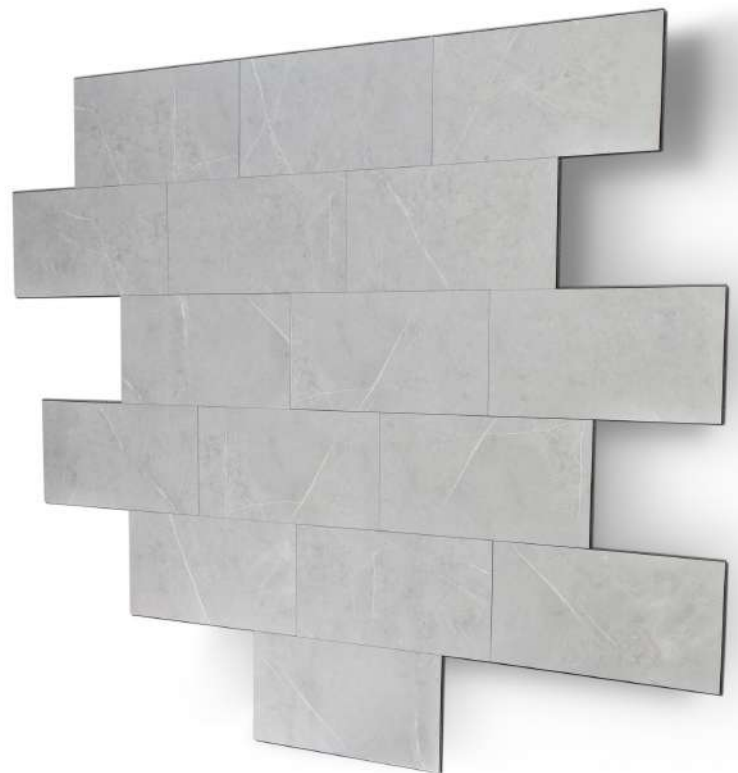
11 Seal around the base with waterproof silicone sealant.



12 Your new wall is complete!

QUICK INSTALLATION GUIDE

1. Priming the wall using a nap roller before starting with the installation of Wall Solution Tongue&Groove tiles warranty an optimum result.
2. Wall Solution Tongue&Groove need to be installed running from floor to ceiling. Use a spirit level to make sure that Wall Solution Tongue&Groove are fitted squarely.
3. Apply glue line (\varnothing 1,5 - 2 mm) in the tiles perimeter to farm a grid system, do not apply too close to the edges leave at least 2 cm gap or this will spill out onto the face of the tiles.
4. Pressing firming against the glue over the length of the tile.
5. When you reach the edge of the wall, measure the distance from the last tile to the wall and mark how much of the tile to cut.
6. In order to cut the tile, draw a line. Put a set square or metal ruler on the line, use Drywall saw or oscillating saw for cut it.
7. Using a trim fill in the gap left at base with waterproof silicone sealant.



Carrara Iris

Technical Data

Sizes	305 x 610 mm	
Total thickness	4 mm	
PVC protective coating	1 mm	
Bevel	V-bevel 4 sides painted	
Colour fastness to light	EN ISO105 B02:2014	6
Dimensional stability	ISO23999:2012	0,10 %
Expansion in temperature change from 23 °C - 45 °C	0,010 %	
Shrinkage in temperature change from 23 °C - 5 °C	-0,047 %	
Curling after heat exposure	ISO23999:2012	0 mm
Fire behavior	UNE-EN 13823:2012	B-s2,d0
Formaldehyde emissions	EN717-1:2004	PASS
Swelling in thickness after immersion in water	EN317:1994	0,9 %
Determination of residual indentation	EN ISO24343-1:2012	0,04 mm
VOC emissions testing	ISO:16000 / 3,6,9,11	A+
VOC emissions testing CDPH350	(California Specification 01350)	PASS
US California Proposition 65 - Phthalate	PASS	

Maintenance



In order to protect your Shower Tile, we recommend the following:

Always consult your dealer if you are going to place the product in places that do not appear as recommended.

Avoid subjecting the coating to extreme temperatures and the continuous action of the sun's rays.

Do not place the product in open places where the sun or rain can reach it directly.

Keep indoor relative humidity between 40% and 60% all year to prevent the coating is subjected to sudden changes in temperature and humidity.

Maintain a temperature in the place of installation of between 16 and 22 °C in

order to prevent movement of expansion or contraction in the plates.

The coating surface Wall Solution Tongue&Groove, which is essentially strong and durable. It does not require additional treatments. No need to be polished, varnished, waxed or brightened because no additional treatment retains its intrinsic and essential properties.

Do not use abrasive products or containing compounds such as ammonia, solvents or other aggressive agents.

Using other cleaners can alter product properties such as brightness or colour. If using others cleaning, perform a preliminary test somewhere inconspicuous the wall.

Discover more products and additional information at

ellasbubbles.com

Toll Free: 800-480-6850
Office Direct: 312-666-3552